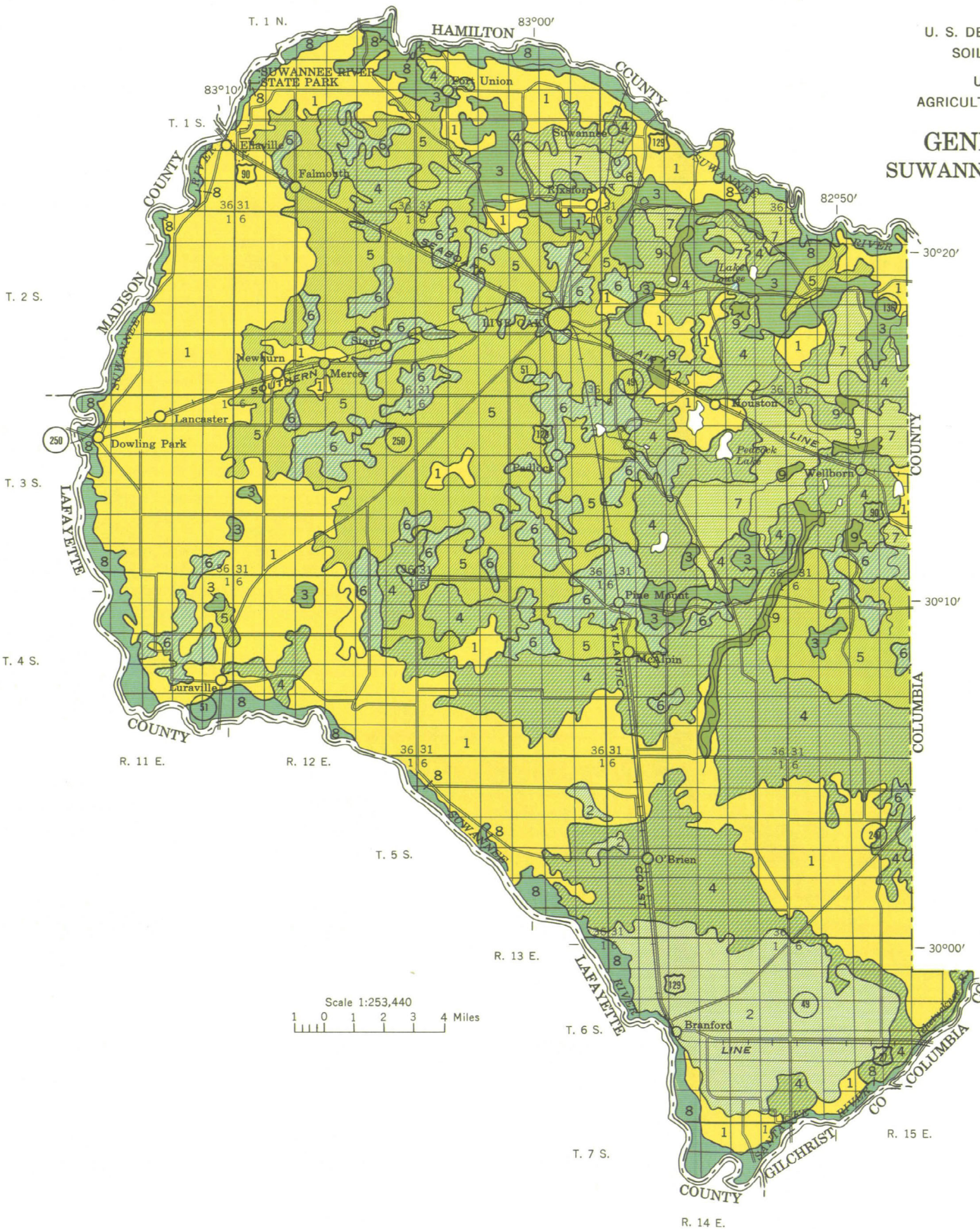


U. S. DEPARTMENT OF AGRICULTURE  
SOIL CONSERVATION SERVICE

UNIVERSITY OF FLORIDA  
AGRICULTURAL EXPERIMENT STATIONS

## GENERAL SOIL MAP SUWANNEE COUNTY, FLORIDA



### SOIL ASSOCIATIONS

Blanton (high)-Lakeland association:  
Well-drained to excessively drained,  
acid sands more than 30 inches deep  
to fine-textured material

Blanton-Chiefland association: Well-  
drained to excessively drained, acid  
to neutral sands 30 to 72 inches deep  
to fine-textured material or limestone

Arredondo-Kanapaha association: Well-  
drained to somewhat poorly drained,  
slightly acid to neutral sands more than  
30 inches deep to fine-textured material  
and derived from phosphatic material

Blanton (low) association: Moderately  
well drained, acid sands more than 30  
inches deep to fine-textured material

Blanton (low)-Susquehanna-Bowie  
association: Moderately well drained,  
nearly level, acid sands more than 30  
inches deep to fine-textured material,  
and interspersed sands that are less  
deep

Susquehanna-Bowie association: Well-  
drained to somewhat poorly drained,  
acid soils that have a sandy surface  
layer 8 inches to more than 3 feet  
deep over a clayey subsoil

Leon-Plummer association: Somewhat  
poorly drained, nearly level, very  
strongly acid sands that have a pan  
stained with organic matter within 30  
inches of the surface, and interspersed  
very poorly drained sandy soils

Blanton-Kalmia-Swamp association:  
Somewhat poorly drained to very  
poorly drained soils on flood plains  
of the Suwannee and Santa Fe Rivers

Alluvial land-Swamp association:  
Very poorly drained soils in  
depressions

August 1963